

 PILATUS



The Super Versatile Jet

**PC-24**

**PC-24**

More Range, More Payload ...



... and Even More Possibilities

 Crafted in Switzerland

---

01	The PC-24 – A Class of Its Own	4
02	Highlights	12
03	Cabin & Comfort	20
04	Cockpit	38
05	Accessibility & Versatility	46
06	Engine & Safety	54
07	First-Class Support	64
08	Crafted in Switzerland	72
09	Technical Data & Personalization	80

---

# 01

The PC-24 – A Class of Its Own



Created by Pilatus.



# Welcome to the Crystal Class

People become enchanted when they experience something as unique and special as a Swiss mountain crystal. Its elegance expresses something words cannot describe. The diverse and unmistakable shape of the crystal has always fascinated. Perhaps it's the hardness that conveys a sense of durability. Or because it is created deep within the mountain, emerging only after a long and arduous journey.

For some, Swiss mountain crystals are a symbol of strength and power. For others, their countless facets make them a symbol of variety and uniqueness. The extraordinary Pilatus PC-24, like the Swiss mountain crystal, is rugged, unique, timeless, and beautiful – discover the Crystal Class.

# The World's First and Only Super Versatile Jet

The PC-24 Super Versatile Jet is the only aircraft combining the cabin size of a midsize jet with best-in-class payload capability, extended range, a large standard cargo door, and the versatility you expect from a Pilatus aircraft.

It's an aircraft that simply doesn't fit into any of the existing business jet categories. That's why we had to create a new one – the Super Versatile Jet Category.



Watch the Video

*The New PC-24 is here*

# 02

## Highlights



| A Class of its Own

# Highlights

## PC-24

**More Access** No other business jet can operate from unpaved and paved surfaces as short as 3,090 feet (940 meters) – giving you access to tens of thousands of additional airfields worldwide – airfields other jets can only fly over.

**More Space** The PC-24 offers a large cabin with room for six executive seats plus an aft divan that converts into a full-size bed, as well as a completely flat floor. The interior has been designed from the outset for quick reconfiguration into any seating and cargo combination.

**Greater Payload** Through extensive component optimization, usable payload has been increased to 3,100 lbs (1,406 kg). This allows the Super Versatile Jet to provide you with the best carrying capacity in its class.





**Cargo Door** A large cargo door is a standard feature of the PC-24 allowing convenient, separate loading of luggage and freight. The separate dedicated passenger door provides easier and more convenient cabin entry.

**Baggage Compartment** The internal baggage compartment in the PC-24 provides 90 cubic feet (2.50 cubic meters) of in-flight accessible luggage. The placement of the compartment means that baggage is stowed in a climate controlled and fully pressurized space.

**Quiet Power Mode** The Quiet Power Mode allows the aircraft to power the cabin and all systems, including climate control, using the right engine in a sub-idle mode while on the ground. This reduces cost and weight compared to a traditional Auxiliary Power Unit – APU.

**More Flexibility** Designed with versatility in mind, the PC-24 offers single-pilot certification, a highly modular cabin with an array of seating configurations, the ability to load large items through the cargo door, and the flexibility to take off and land from unpaved runway surfaces.

**Crystal Class Support** The PC-24 CrystalCare program is business aviation's most comprehensive warranty and service package, provided by Pilatus' global factory-trained service network.

**Swiss Quality** Designed and built with meticulous craftsmanship and precision in Switzerland, the PC-24 enjoys the prestige and reputation that accompany its Swiss heritage.

03

Cabin & Comfort



| A Level above First

More space.  
Less compromise.



The PC-24 delivers the ultimate blend of passenger comfort, the finest interior craftsmanship and unmatched cabin customization. Its cabin volume tops business jets costing almost twice as much. The cabin provides enough room for six executive seats plus an extended aft divan.

In addition, there is plenty of room for your valuable belongings, carried in a heated and fully pressurized cabin section, which is accessible at any time during the flight. With the PC-24's best in class cargo capacity of 3,100 lbs (1,406 kg), you can bring it all. Numerous interior options and designs allow you to create a unique PC-24 to satisfy your own personal style.



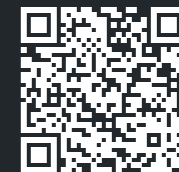
## A Workspace even more Productive than your Office

Put your en route time to use. The instant you board, you'll be impressed by the generous space and striking elegance of the PC-24's cabin, with comfort and ergonomics at the forefront.

The quiet and luxuriously comfortable cabin provides a tranquil space for focused work. The second row of seats is designed to swivel 180 degrees, quickly facilitating productive group collaboration.

Each seat provides the ideal environment for work or for meaningful rest. The new extended length divan, easily convertible to a bed, gives you an ideal spot for a quick power-nap. Don't miss a minute; stay connected in the air with multiple in-flight connectivity options.

When your time in the sky is this productive, you'll have more time on the ground to spend with the people most important to you.



Watch the Cabin Tour  
Video

# UNMATCHED VERSATILITY

Space that Changes  
the Mission.



Designed with versatility at its core, the PC-24 offers seven unique cabin configurations to cover a wide range of missions. The interior of the PC-24 has been designed from the outset for quick and easy reconfiguration – an option not found in any other business jets. Each passenger seat features quick-change capability, facilitating their easy installation or removal.

An entirely flat floor provides exceptional ease of movement around the cabin. The aft partition is movable so you can easily enlarge the passenger cabin or increase the baggage compartment volume for each and every flight.

## The Cabin that says “yes”!

With the elegantly practical layout you expect from Pilatus, the newly redesigned cabinetry further optimizes available space for both function and storage. The PC-24 cleverly delivers an abundance of storage options, sometimes even where you don't expect it.

The optional divan provides additional storage capacity, ensuring every inch of available space is fully utilized for your benefit. Optional crystal storage provides a safe and elegant space to store and display your glassware.



# A Forward-Thinking Solution.



The PC-24 also features a private, fully enclosed, externally serviceable lavatory in the forward area of the cabin. Highly discreet, it is seamlessly integrated to optimize the space available for passengers and cargo.

# Internet & In-flight Entertainment System

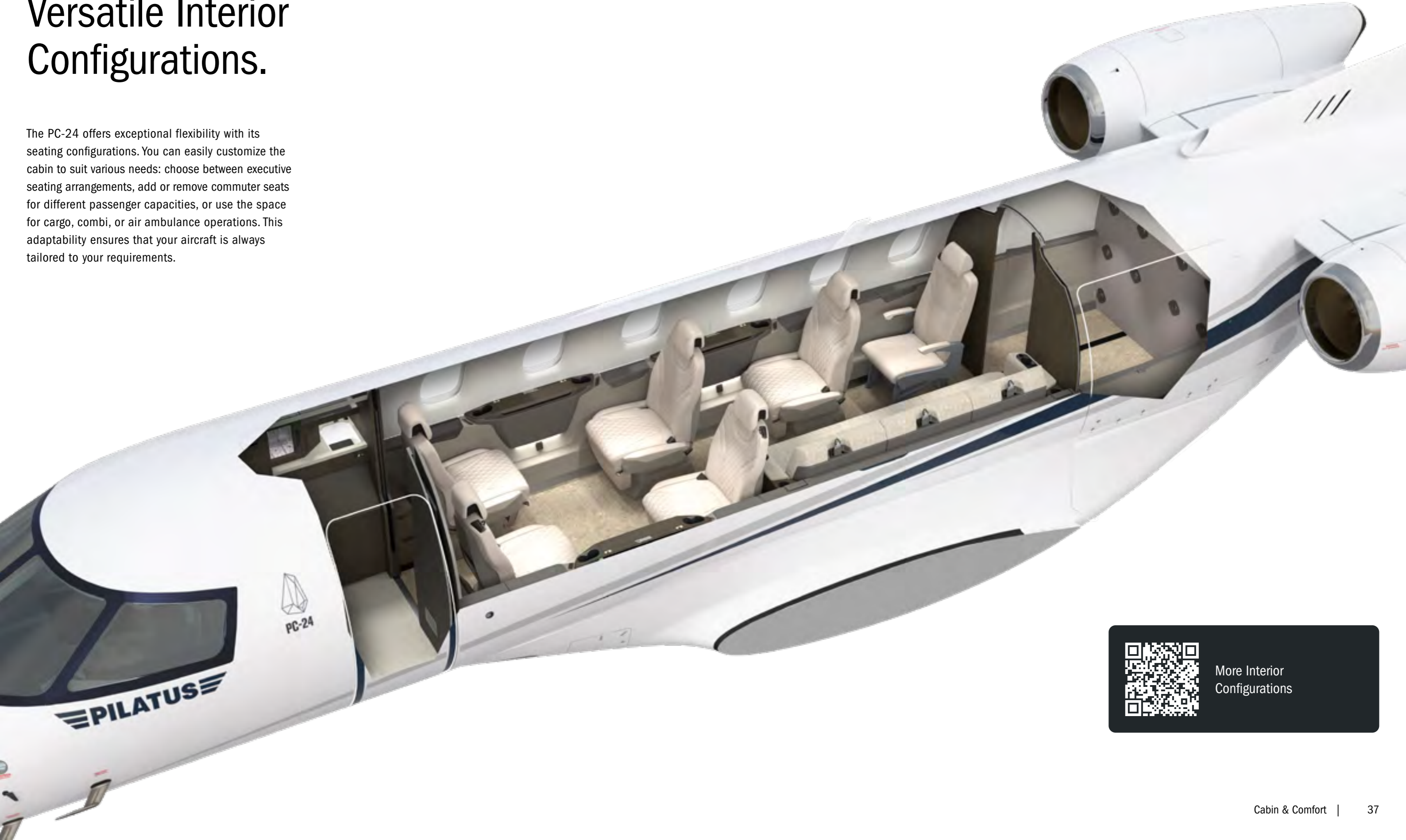
The new in-flight entertainment system incorporates state-of-the-art technologies allowing passengers to seamlessly connect and control the cabin via Android or iOS app or web-based interface. Thanks to the 10-inch high-resolution touch display, the premium speakers with optional subwoofer and the user-friendly interface, passengers can stream music to the system via Bluetooth and enjoy movies and other content streamed from the system to smartphones and tablets, all in top quality.

A mood lighting system, where the passenger can change the color of the interior lights, is also offered as a feature.



# Versatile Interior Configurations.

The PC-24 offers exceptional flexibility with its seating configurations. You can easily customize the cabin to suit various needs: choose between executive seating arrangements, add or remove commuter seats for different passenger capacities, or use the space for cargo, combi, or air ambulance operations. This adaptability ensures that your aircraft is always tailored to your requirements.



More Interior Configurations

# 04


Cockpit



| Designed for 45'000 Feet  
and Two Hands



# This Cockpit has an Ace up its Sleeve



Watch the Video  
Cockpit Tour with Test Pilot

The PC-24's Advanced Cockpit Environment (ACE) sets the standard for high-tech simplicity. Pilatus ACE is so capable and offers such a wealth of functionality that in its most basic configuration it boasts the most intuitive and user-friendly cockpit concepts ever seen in business aviation. Four large displays ensure that all relevant information is presented in the right place, without delay.

# A Smarter Move

All Pilatus aircraft are certified for single-pilot operation, and the PC-24 is no exception. The cockpit layout is efficient and intuitive. From the comfort of the captain's seat, the pilot enjoys an environment that has been designed specifically to reduce workload and improve safety while providing full situational awareness under all circumstances.

Simply put, the PC-24 is the perfect combination of single-pilot operational know-how, and state-of-the-art avionics technology. If preferred, the PC-24 can also be flown by two pilots.



# 05

## Accessibility & Versatility

Go where no other Business Jet  
has gone before.



Watch the Video  
PC-24 Road Landing



# Impressive on Paper – Remarkable in the Field



The PC-24 is the only business jet able to take off and land on paved and unpaved runways as short as 3,090 feet (940 m) at maximum gross weight. This enables dramatically reduced trip times by accessing thousands of airports closer to your ultimate destination.

The maximum cruise speed of the PC-24 is 440 knots (815 km/h), taking an average of two hours and 29 minutes for a 1,000 nm (1,852 km) trip. Maximum range with four passengers is 2,040 nm.

# BRING IT ALL.



Introducing the world's first business jet with a standard pallet-sized cargo door. The PC-24 offers an outstanding 90 ft<sup>3</sup> (2.50 m<sup>3</sup>) of baggage compartment space, fully pressurized and accessible during flight.

Whether you need a comfortable place to rest or a productive workspace, the PC-24's well appointed and spacious cabin will provide it. For all the moments you can't get back, the Super Versatile Jet will get you there.

## The Door to a World of new Possibilities

06

Engine & Safety



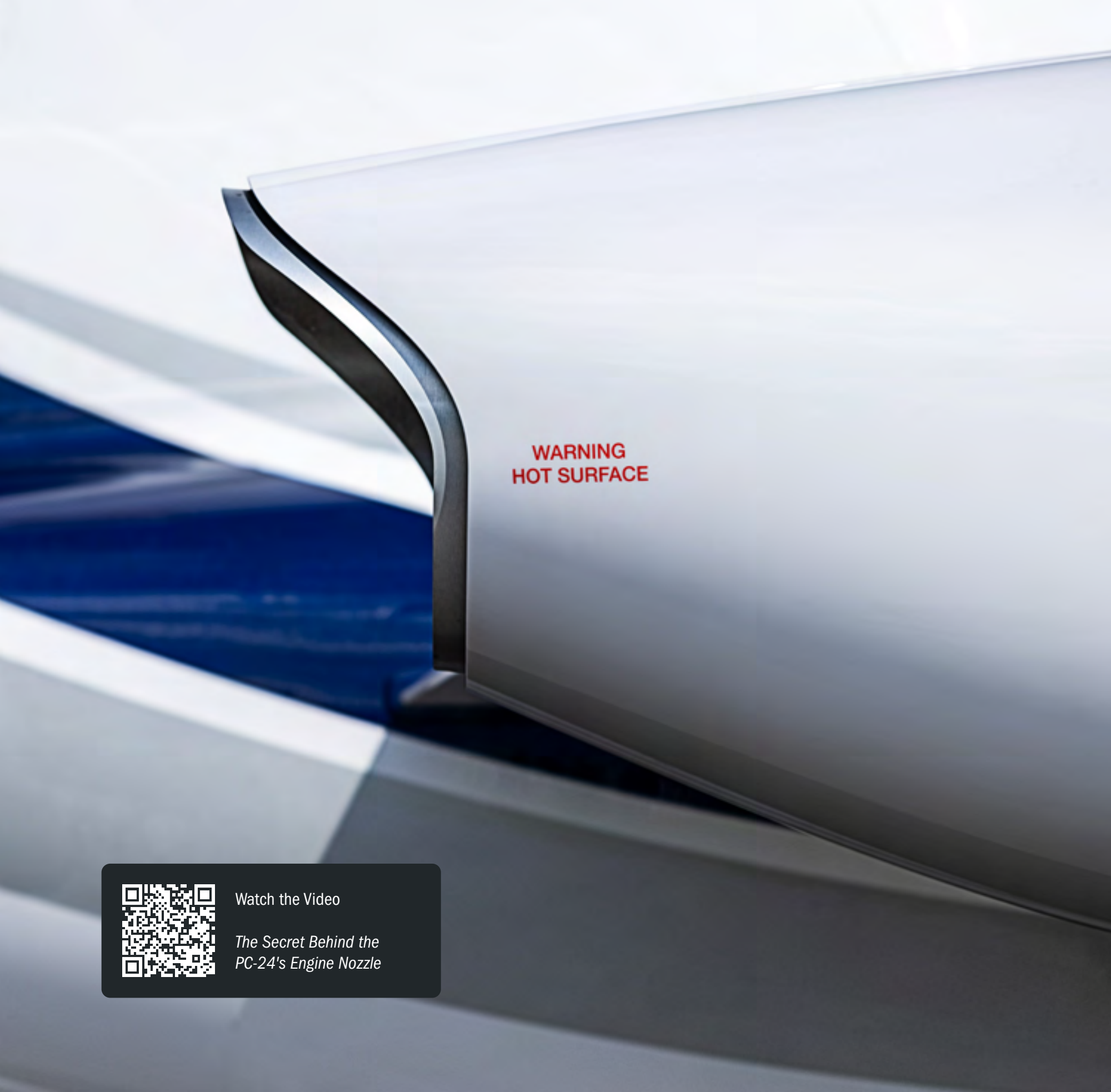
Engineering at its Best

# Consumption, Emissions, Noise: All Minimized

With the new PC-24, a team of over 300 highly skilled engineers and craftsmen were tasked with enhancing the PC-24 to deliver better performance capabilities and improve the overall passenger cabin experience.

Our Swiss craftsmen live with the mindset that every stitch can be straighter, every paint stripe can be smoother, and every gap can be made tighter. That true craftsman philosophy is what drives Pilatus' innovation. This drive to never stop improving is deeply ingrained in the Swiss DNA, and is proudly displayed in our work.





WARNING  
HOT SURFACE

## Engineering motion the Coandă way

At Pilatus, our legacy of innovative and efficient technology is driven by the world around us. To power the PC-24, we chose the Williams International FJ44-4A, a world-renowned power unit. It delivers ample power to support the PC-24's excellent field performance and enables a direct climb to the PC-24's operational ceiling.

The unique Quiet Power Mode on the PC-24 provides quiet, economical energy to power electrical systems – including heating and air-conditioning – independent of any source of ground power, and eliminates the need for a heavy and expensive auxiliary power unit.



Watch the Video

*The Secret Behind the  
PC-24's Engine Nozzle*

# One of a Kind

The Safest & Most Advanced in its Class



The Pilatus PC-24 has built a very strong reputation for safety, and Swiss engineering excellence. Designed and certified to the highest international aviation standards, the PC-24 combines advanced flight systems with exceptional short-field performance, giving operators confidence in a wide range of environments. With a solid operational track record and continuous oversight from global aviation authorities, the PC-24 stands out as one of the most trusted and safest business jets in its class.

07

First-Class Support



We Succeed when  
our Customers Succeed.

# PILATUS CLASS SUPPORT

Your Trusted Partner  
for Every Flight,  
Every Mission.



As an owner of an aircraft made by Pilatus, you will receive personal attention through our global service network. Training, parts, and customer programs are just a phone call away. In addition, each Pilatus aircraft comes with one of the strongest new aircraft warranties in the industry.

The intelligent PC-24 also actively monitors potential maintenance needs and automatically notifies the appropriate parties remotely.

# CrystalCare – Fly with Complete Peace of Mind.

After listening carefully to the needs of our customers, we created CrystalCare: an option to enjoy the most comprehensive service and support program in the industry, exclusively for Pilatus operators. While offering unparalleled peace of mind by eliminating the uncertainty of maintenance cost variations, CrystalCare even includes Mobile Recovery Service when away from home. CrystalCare ensures your aircraft is always ready for action, without unexpected costs. Experience a step above first class – the Crystal Class.



CrystalCare Example  
Price Calculations

08

Crafted in Switzerland



Swiss Heritage.  
Swiss Passion.

# Proven Since 1939



Decades of Swiss  
Precision – Excellence  
in Aviation, Innovation,  
and Craftsmanship.

For over 85 years, Pilatus has been a proven leader in aviation, engineering and the production of fine aircraft, earning a rock solid reputation for unequaled Swiss craftsmanship. Reliability is our cornerstone. Innovation is our passion. We work tirelessly to constantly improve and refine our extraordinary aircraft, and to provide our customers with the most exquisite flight experience available.

Fastidious and dedicated, many second and third-generation Pilatus employees focus on building the very best aircraft by merging state-of-the-art technology and traditional Swiss craftsmanship to achieve the highest standard of precision and quality.

# Swiss- Stainable

Naturally, Switzerland's respect for the environment permeates the culture at Pilatus. This is because for many, dedication to nature and the environment goes beyond governance and legislation. It's a matter of personal pride, a Swiss-Stainable strategy.

Pilatus operates a large solar power plant at its Stans headquarters – generating clean, renewable electricity. The entire solar installation is connected to the local power grid. In a typical year, Pilatus returns approximately 80 percent of the clean, renewable solar energy it harvests to the power grid for others to use. 80 percent of the energy used to heat factory buildings is produced from renewable, local and sustainable sources such as the local wood-fired power plant.

To allow you to reduce carbon emissions on every flight, the PC-24 is ready to use Sustainable Aviation Fuel (SAF) blends.

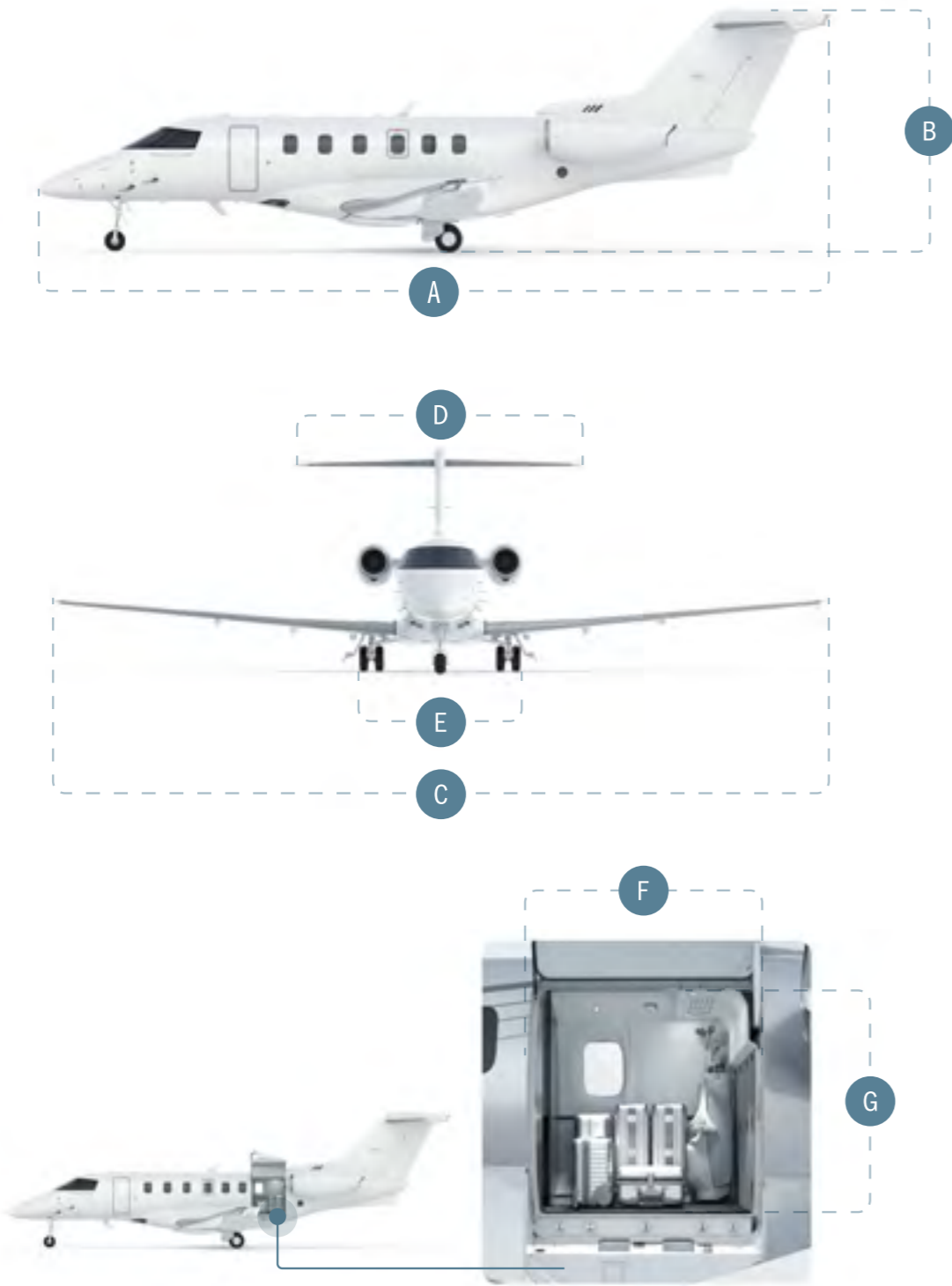


09

Technical Data & Personalization



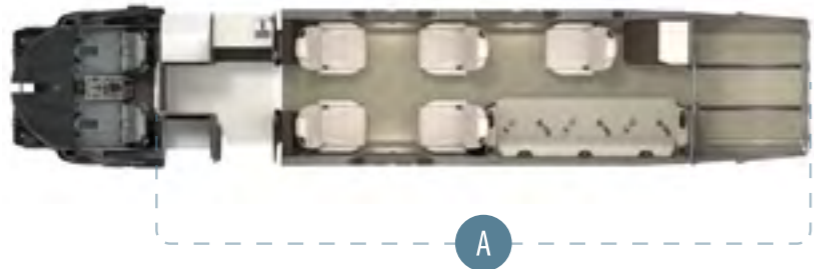
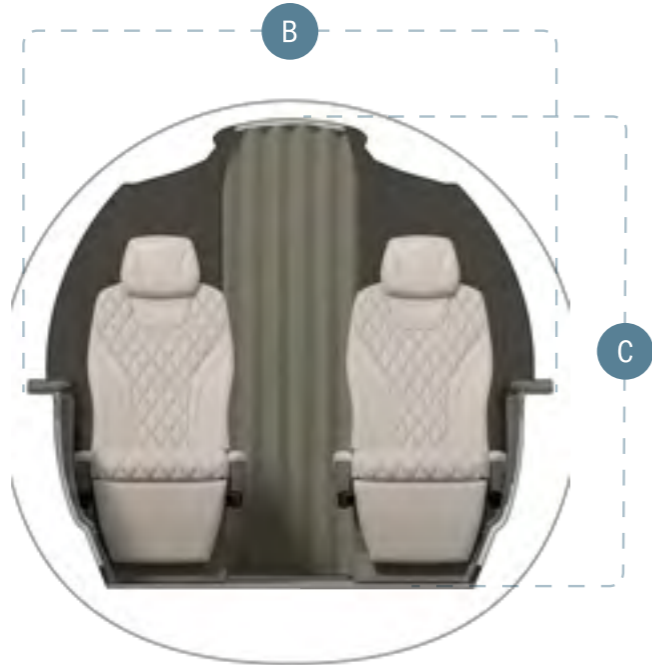
# Exterior View



# Dimensions

	U.S.	Metric
A - Length	55 ft 2 in	16.80 m
B - Height	17 ft 4 in	5.30 m
C - Wing span	55 ft 9 in	17.00 m
D - Horizontal tail span	22 ft 4 in	6.80 m
E - Landing gear width	10 ft 11 in	3.30 m
F - Cargo door width	4 ft 1 in	1.25 m
G - Cargo door height	4 ft 3 in	1.30 m
Wing area	332.70 ft <sup>2</sup>	30.91 m <sup>2</sup>
Turn radius, wing tip	41 ft 4 in	12.60 m
Turn radius, outside main gear	19 ft 5 in	5.90 m
Passenger door height	4 ft 5 in	1.34 m
Passenger door width	2 ft 0 in	0.61 m

# Interior View



# Dimensions

	U.S.	Metric
A - Cabin length	23 ft 0 in	7.02 m
B - Cabin width	5 ft 7 in	1.69 m
C - Cabin height	5 ft 1 in	1.55 m
Cabin floor width	3 ft 10 in	1.16 m
Cabin volume	498 ft <sup>3</sup>	14.10 m <sup>3</sup>
Baggage compartment volume (aft partition in forward position)	90 ft <sup>3</sup>	2.50 m <sup>3</sup>
Baggage compartment volume (aft partition in aft position)	51 ft <sup>3</sup>	1.40 m <sup>3</sup>

## Performance

	U.S.	Metric
Maximum cruise speed flight level 280	440 KTAS	815 km/h
Maximum range 6 passengers (1,200 lb/544 kg)	2,000 nm	3,704 km
Maximum payload (3,100 lb/1,406 kg)	1,154 nm	2,137 km
Ferry range NBAA IFR reserves of 100 nm (185 km), LRC + 30 min, single-pilot operations	2,123 nm	3,931 km
Maximum altitude	45,000 ft	13,716 m
Take-off distance balanced field length Maximum take-off weight, International Standard Atmosphere, sea level, dry paved runway	3,090 ft	940 m
Take-off distance balanced field length Maximum take-off weight, International Standard Atmosphere +20°C, 5,000 ft/1,524 m, dry paved runway	5,440 ft	1,657 m
Landing distance over 50 ft (15 m) obstacle Maximum landing weight, International Standard Atmosphere, sea level, dry paved runway	2,410 ft	735 m
Rate of climb sea level Maximum take-off weight, International Standard Atmosphere	3,960 ft/min	20.10 m/s
Rate of climb flight level 300	1,845 ft/min	9.30 m/s
Time to climb sea level to flight level 450 Direct climb	27.1 min	27.1 min
Stall speed Maximum landing weight, International Standard Atmosphere, sea level	83 KIAS	153 km/h

## Loading

	U.S.	Metric
Wing	332.71 ft <sup>2</sup>	30.91 m <sup>2</sup>
Power	56 lb/ft <sup>2</sup>	275 kg/m <sup>2</sup>

## Weights

	U.S.	Metric
Maximum ramp weight	18,840 lb	8,545 kg
Maximum take-off weight	18,740 lb	8,500 kg
Maximum landing weight	17,340 lb	7,865 kg
Maximum zero fuel weight	14,660 lb	6,650 kg
Usable fuel (888.5 U.S. gallons/3,363 l)	5,964 lb	2,705 kg
Maximum payload	3,100 lb	1,406 kg
Maximum payload with full fuel	1,314 lb	596 kg
Basic operating weight Executive configuration 6 seat, including one pilot	11,559 lb	5,243 kg

## Miscellaneous

Airframe maintenance schedule	600 h/annual
-------------------------------	--------------

Certification	EASA CS 23 and FAA FAR 23, Commuter Category
---------------	--

Design service life	30,000 h/30,000 landings
---------------------	--------------------------

Dual wheel main landing gear with low pressure tires (72 psi)

Single-point pressure refueling port

## Powerplant

Manufacturer	Williams International
--------------	------------------------

Model	FJ44-4A QPM
-------	-------------

Normal take-off thrust per engine	3,420 lbf	1,551 kgf
-----------------------------------	-----------	-----------

Automatic thrust reserve allowing thrust increase to	3,600 lbf	1,633 kgf
--	-----------	-----------

Time Between Overhaul (TBO)	5,000 h
-----------------------------	---------

Hot section inspection interval	2,500 h
---------------------------------	---------

Scheduled inspection interval	600 h
-------------------------------	-------

Dual channel Full Authority Digital Engine Control (FADEC)

Aircraft cooling or heating on the ground under own power (Quiet Power Mode)

## Kinds of operations

Visual Flight Rules (VFR)

Instrument Flight Rules day and night (IFR)

Private (FAR Part 91, EASA Part-NCC) and commercial (FAR Part 135, EASA Part-CAT) operations

Flight into known icing conditions

Single or dual-pilot operations

Operations from paved and unpaved surfaces

CAT II certified (optional equipment)

## Warranty

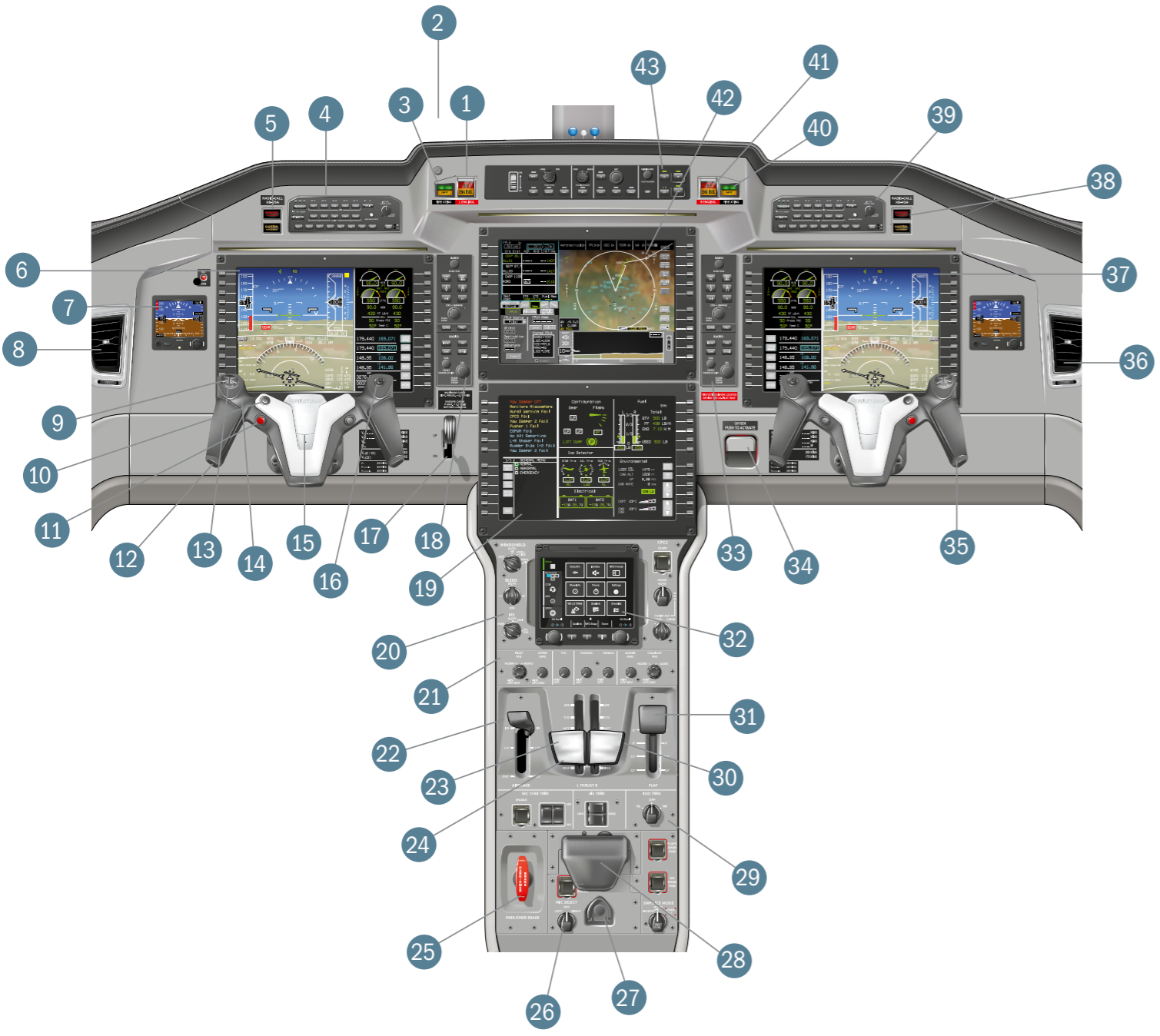
Airframe	7 years	5,000 h
----------	---------	---------

Engine	5 years	2,000 h
--------	---------	---------

Avionics	3 years	N/A
----------	---------	-----

Interior, Paint & Systems	2 years	2,000 h
---------------------------	---------	---------

# PC-24 Advanced Cockpit Environment - ACE



- 1 - Engine isolation switch
- 2 - Cockpit area microphone
- 3 - Fire extinguisher switch
- 4 - Audio control panel 1
- 5 - Master warning/caution attention getters (pilot)
- 6 - Primary flight display (pilot)
- 7 - Electronic standby flight display
- 8 - Air outlet
- 9 - Pitch trim
- 10 - Tactile control steering
- 11 - Auto pilot disconnect/pusher interrupt
- 12 - Control yoke (pilot)
- 13 - Electronic check list button
- 14 - Push to transmit
- 15 - Chart holder
- 16 - Map light
- 17 - Landing gear handle
- 18 - Primary flight display controller (pilot)
- 19 - Lower multi-function display
- 20 - Windshield, bleed, ice protection system
- 21 - Display reversionary control panel/internal lighting panel
- 22 - Airbrake extension lever

- 23 - Autothrottle disconnect (left/right)
- 24 - Thrust lever
- 25 - Park and emergency brake handle
- 26 - Microphone selector switch
- 27 - Hand microphone
- 28 - Cursor control device
- 29 - Trim control panel
- 30 - Take-off and go-around (left/right)
- 31 - Flap selection lever
- 32 - Touch screen controller
- 33 - Primary flight display controller (co-pilot)
- 34 - Oxygen system on/off handle
- 35 - Control yoke (co-pilot)
- 36 - Air outlet
- 37 - Primary flight display (co-pilot)
- 38 - Master warning/caution attention getters (co-pilot)
- 39 - Audio control panel 2
- 40 - Fire extinguisher switch
- 41 - Engine isolation switch
- 42 - Upper multi-function display
- 43 - Flight controller

# Interior Design Lines

Introducing the tech-inspired Launch Interior Design Lines, a balanced blend of innovation and swiss aesthetics. The cutting-edge design reflects the essence of modern technology, with sleek patterns and futuristic finishes that bring a dynamic, high-tech feel to any surface. Available in striking color themes, each inspired by the digital era.



St Tropez



Osaka



Portofino



Valencia



Sedona

# Premium Materials & Finishings

Together with Designworks, a BMW Group company, we are pleased to offer the most comfortable and modern cabin experience with a collection of Design Lines and interior options. Pilatus uses only the best quality, hand-selected wood veneers and premium leathers with custom hand-stitching for the finishing process. With a wealth of designs to appeal to a multitude of operations, the PC-24 is crafted to reflect your unique style.



Osaka



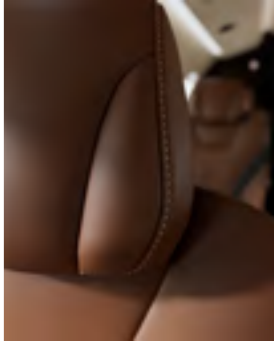
Portofino



Valencia



Sedona



# Custom Paint Schemes

Offering a selection of standard paint schemes designed especially to highlight the exterior beauty of the PC-24. The Standard Collection features a solid base color and up to three solid stripes extending along the fuselage and the vertical surfaces of the empennage.

For a more distinguished look on the ramp and in the air, add further color and intricacy to the standard classic design schemes. The Exclusive Collection features a solid base color and up to four solid stripes extending along the fuselage, the full empennage, and the belly fairing, including the wing to fuselage intersection fairing. The stripes can also be completed in mica (pearl) colors.



Gorner Glacier - Alpine Clematis metallic



Gorner Glacier - Edelweiss metallic



Gorner Glacier - Striated Mezeron metallic




Trift Glacier - Alpine Clematis metallic



Tsanflueron Glacier - Mountain Avens metallic





Paint Scheme Configurator

Due to certification and other regulations or technical limitations, certain options may not be available in some areas of the world. Some product options shown are available as upgrades and may come with an additional cost.

# Fly the PC-24.

pc-24sales@pilatus-aircraft.com



Find your Authorized  
Pilatus Sales Center

[Sales Centers →](#)

